

Product Datasheet

18-Port Full Gigabit PoE Fiber Switch

ONV-POE33016PFB



OVERVIEW

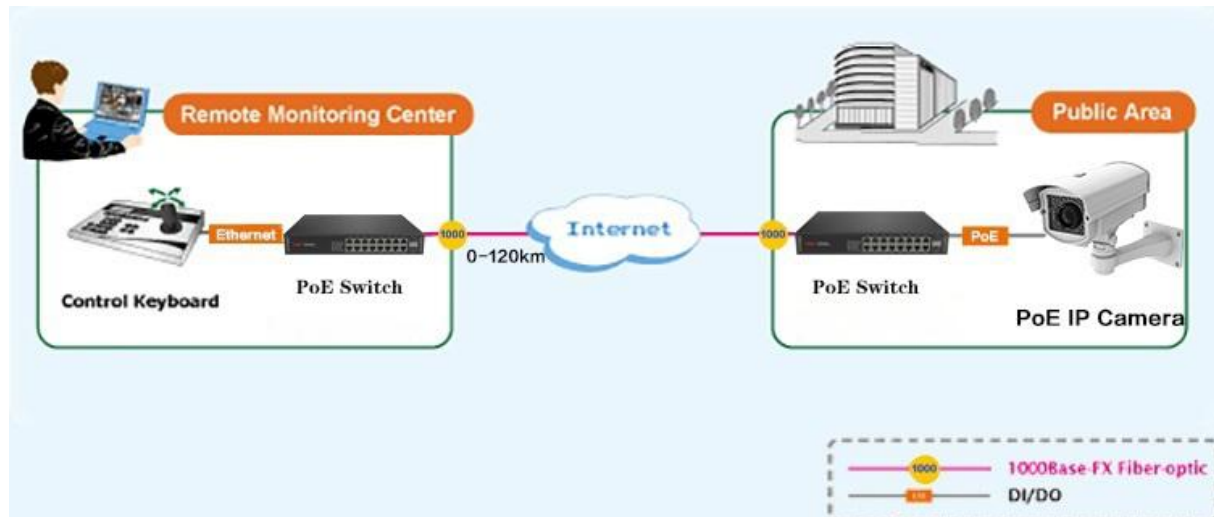
The ONV-POE33016PFB series is a full gigabit PoE fiber switch independently developed by ONV. It has 16*10/100/1000M RJ45 ports and 2*1000M SFP slot ports. Port 1-16 can support IEEE802.3af/at standard PoE power supply. single port PoE power reaches 30W, and the maximum PoE output power is 250W. As a PoE power supply device, it can automatically detect and recognize the power receiving equipment that meets the standard and supply power through the network cable. It can supply power to POE terminal equipment such as wireless AP, webcam, VoIP, visual intelligent building intercom through the network cable, and meet the network environment that needs high-density PoE power supply. It is suitable for hotels, campuses, parks, attractions, supermarkets, factory quarters, and small and medium-sized enterprises to form a cost-effective network.

Unmanaged model, plug and play, no configuration, easy to use.

FEATURE

■ Full gigabit access, gigabit SFP port uplink

- ◇ All series supports "gigabit Ethernet port and gigabit SFP fiber port " combination, which enables users to flexibly build networking to meet the needs of various scenarios.
- ◇ Support non-blocking wire-speed forwarding.
- ◇ Support full-duplex based on IEEE802.3x and half-duplex based on Backpressure.



■ Intelligent PoE power supply function

- ◇ 16*10/100/1000Base-T RJ45 ports, meeting the needs of security monitoring, teleconferencing system, wireless coverage, and other scenarios.
- ◇ IEEE802.3af/at PoE standard, without damaging non-PoE devices.
- ◇ Priority system for PoE port, it will supply power to the high priority level port first when the power budget is insufficient and avoid overwork of the device.

■ Stable and reliable

- ◇ CCC, CE, FCC, RoHS.
- ◇ Plug and play, no configuration, simple and convenient.
- ◇ Low power consumption, no fan mute design, galvanized steel metal casing.
- ◇ Self-developed power supply, high redundancy design, providing a long term and stable PoE power output.
- ◇ The user-friendly panel, it can show the device status through the LED indicator of PWR, PoE.

TECHNICAL SPECIFICATION

| Model | ONV-POE33016PFB | ONV-POE33024PFB |
|---------------------------|---|--|
| Interface Characteristics | | |
| Fixed Port | 16*10/100/1000Base-T PoE ports(Data/Power) | 24*10/100/1000Base-T PoE ports(Data/Power) |
| | 2*1000Base-X SFP ports (Data) | 2*1000Base-X SFP ports (Data) |
| | | |
| Ethernet Port | Port 1-16 can support 10/100/1000Base-T,auto-sensing, full/half duplex MDI/MDI-X | Port 1-24 can support 10/100/1000Base-T,auto-sensing, full/half duplex MDI/MDI-X |
| Twisted Pair Transmission | 10BASE-T: Cat3,4,5 UTP(≤100 meter) 100BASE-TX: Cat5 or later UTP(≤100 meter) 1000BASE-T: Cat5e or later UTP(≤100 meter) | |
| SFP Slot Port | Gigabit SFP optical fiber interface, default matching optical modules (optional order single-mode / multi-mode, single fiber / dual fiber optical module. LC) | |
| Optical Cable | Multi-mode: 850nm 0 ~ 550M, single mode: 1310nm 0 ~ 40KM, 1550nm 0 ~ 120KM. | |
| Chip Parameter | | |
| Network Protocol | IEEE802.3 10BASE-T, IEEE802.3i 10Base-T IEEE802.3u 100Base-TX, IEEE802.3ab 1000Base-T IEEE802.3z 1000Base-X, IEEE802.3x | |
| Forwarding Mode | Store and Forward(Full Wire Speed) | |
| Switching Capacity | 48Gbps (Non-blocking) | 52Gbps (Non-blocking) |
| Forwarding Rate@64byte | 26.78Mpps | 38.69Mpps |
| MAC | 8K | |
| Buffer Memory | 4M | |

| | | |
|---|---|-----------------------------------|
| Jumbo Frame | 9.6K | |
| LED Indicator | Power:PWR (green), network 1-16(24)/ G1-2 (green), POE:PoE (green) | |
| Reset Switch | Yes, One-button factory reset | |
| PoE & Power Supply | | |
| PoE Port | Port 1 to 16 IEEE802.3af/at @ POE | Port 1 to 24 IEEE802.3af/at @ POE |
| Power Supply Pin | Default 1/2 (+), 3/6 (-) | |
| Max Power Per Port | 30W, IEEE802.3af/at | |
| Total PWR / Input Voltage | 250W (AC100-240V) | |
| Power Consumption | Standby<18W, full Load<240W | Standby<25W, full Load<250W |
| Power Supply | Built in power supply, AC100~240V 50-60Hz 4.1A Short circuit, over current, overload protection. | |
| Physical Parameter | | |
| Operation TEMP / Humidity | -20~+55°C;5%~90% RH Non condensing | |
| Storage TEMP / Humidity | -40~+75°C;5%~95% RH Non condensing | |
| Dimension (L*W*H) | 270.5*181*44.5mm | 330*204*44mm |
| Net /Gross Weight | <1.7kg /<2.2kg | <2.3kg /<3kg |
| Installation | Desktop, wall mounted,19 inch 1U cabinet | |
| Certification & Warranty | | |
| Lightning protection / protection level | Lightning protection: 4KV 8/20us; Protection level: IP30 | |
| Certification | CCC,CE mark, commercial; CE/LVD EN60950;FCC Part 15 Class B; RoHS | |
| Warranty | 3 years, lifelong maintenance. | |

181mm

44.5mm

270.5mm

A B C

AC/IN 100-240V

D

- A. Working LED Indicator
B. 16* POE port
C. 2* gigabit SFP Port
D. power input port: AC100-240.50-60HZ

The diagram illustrates a PoE network topology. A central PoE Switch (PoE 33016PFB) is connected to a PoE Splitter (PD 3101) via a Cat. 5/5e/6 cable. The PoE Splitter is connected to two IP Cameras via Cat. 5/5e/6 cables. The PoE Switch is also connected to a Fiber media converter via a Cat. 5/5e/6 cable. The Fiber media converter is connected to an NVR via a Cat. 5/5e/6 cable. The NVR is connected to a Monitor via a Video line. The PoE Switch is powered by a Power source.

ORDERING INFORMATION

| Model | Description |
|--|--|
| ONV-POE33016PFB | Unmanaged PoE fiber switch with 16*10/100/1000M RJ45 ports and 2*1000M uplink SFP fiber slot ports, port 1-16 can support IEEE802.3af/at PoE standard, Built-in 250W power supply. Support 1U/19 inch rack installation. |
| ONV-POE33024PFB | Unmanaged PoE fiber switch with 24*10/100/1000M RJ45 ports and 2*1000M uplink SFP fiber slot ports, port 1-24 can support IEEE802.3af/at PoE standard, Built-in 250W power supply. Support 1U/19 inch rack installation. |
| Note: The SFP optical module is not included by default and needs to be purchased separately. | |

PACKING LIST

| | CONTENT | QTY | UNIT |
|--------------|---------------------------------------|-----|------|
| PACKING LIST | 18-port full gigabit PoE fiber switch | 1 | SET |
| | AC power cable+Power adapter | 1 | SET |
| | Mounting Kits(Hanging Ear) | 1 | SET |
| | User Guide | 1 | PC |
| | Warranty Card | 1 | PC |

OPTICAL MODULE INFORMATION

| Product | Model | Description | Unit |
|----------------------|---------------|--|------|
| 1.25G Optical Module | ONV-2630 | SFP optical module, 1.25G, multi mode dual fiber 850nm, transmission distance: 550m, LC interface, support DDM function, support hot plug and pull. | PC |
| | ONV-2632 | SFP optical module, 1.25G, single-mode dual fiber 1310nm, transmission distance: 20km, LC interface, support DDM function, support hot plug and pull. | PC |
| | ONV-2612-T | SFP optical module, 1.25G, single-mode single fiber TX1310nm/RX1550nm, transmission distance: 20km, LC interface, support DDM function, support hot plug and pull. | PC |
| | ONV-2613-R | SFP optical module, 1.25G, single-mode single fiber TX1550nm/RX1310nm, transmission distance: 20km, LC interface, support DDM function, support hot plug and pull. | PC |
| | ONV-2612-T-SC | SFP optical module, 1.25G, single-mode single fiber TX1310nm/RX1550nm, transmission distance: 20km, SC interface, support DDM function, support hot plug and pull. | PC |
| | ONV-2613-R-SC | SFP optical module, 1.25G, single-mode single fiber TX1550nm/RX1310nm, transmission distance: 20km, SC interface, support DDM function, support hot plug and pull. | PC |
| Power Module | ONV-2633 | 1.25G SFP optical module transfers to 10/100/1000M RJ45 port. | PC |

CONTACT US



OPTICAL NETWORK VIDEO TECHNOLOGIES (SHENZHEN) CO., LTD.

Tel: 0086-755-33376606

Fax: 0086-755-33376608

Email: onv@onv.com.cn

Website: www.onvcom.com

Zip: 518000

Headquarter Address: Room 1003, Block D, Terra Building, Futian District, Shenzhen, China

Factory Address: The 4-6th Floor, No. 59, HuaNing Road, Xinwei Community, Dalang Street,
Longhua District, Shenzhen, China

