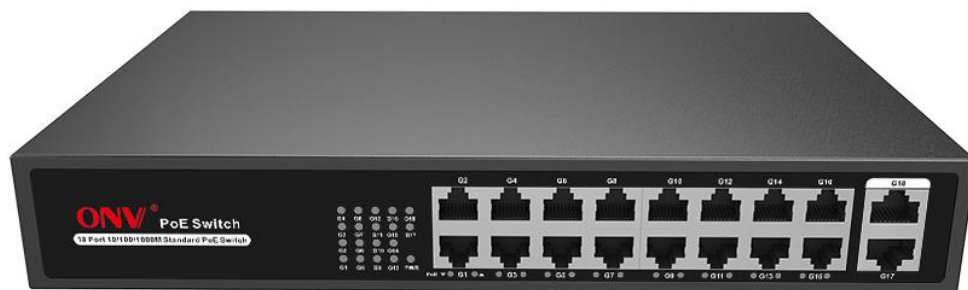


Product Datasheet

18-port Full Gigabit PoE Switch

(ONV-H3016PS)



OVERVIEW

The ONV-H3016PS is a full gigabit unmanaged PoE switch independently developed by ONV. It has 16*10/100/1000Base-T PoE ports and 2*10/100/1000Base-T uplink RJ45 ports. Port 1-16 can support IEEE802.3af/at PoE standard. Single-port PoE power up to 30W. As a PoE power supply device, it can automatically detect and recognize the power receiving equipment that meets the standard and supply power through the network cable. It can supply power to POE terminal equipment such as wireless AP, webcam, VoIP phone, video access control intercom, etc. through a network cable to meet the network environment that needs a high-density PoE power supply. It is suitable for hotels, campuses, factory quarters, and small and medium-sized enterprises to form an economy efficient network.

Unmanaged mode, plug and play, no configuration, easy to use.

FEATURE

■ Full gigabit port

- ◇ Support non-blocking wire-speed forwarding.
- ◇ Support full-duplex based on IEEE802.3x and half-duplex based on Backpressure.
- ◇ Provide Gigabit Ethernet ports and dual RJ45 ports uplink for flexible networking and meets the networking requirements of various scenarios.

■ Intelligent PoE power supply

- ◇ IEEE802.3af/at PoE standard, without damaging non-PoE devices.
- ◇ Priority system for PoE port, it will supply power to the high priority level port first when the power budget is insufficient and avoid overwork of the device.
- ◇ 16*10/100/1000Base-T RJ45 ports, meeting the needs of security monitoring, teleconferencing system, wireless coverage, and other scenarios.

■ Stable and reliable, easy to use

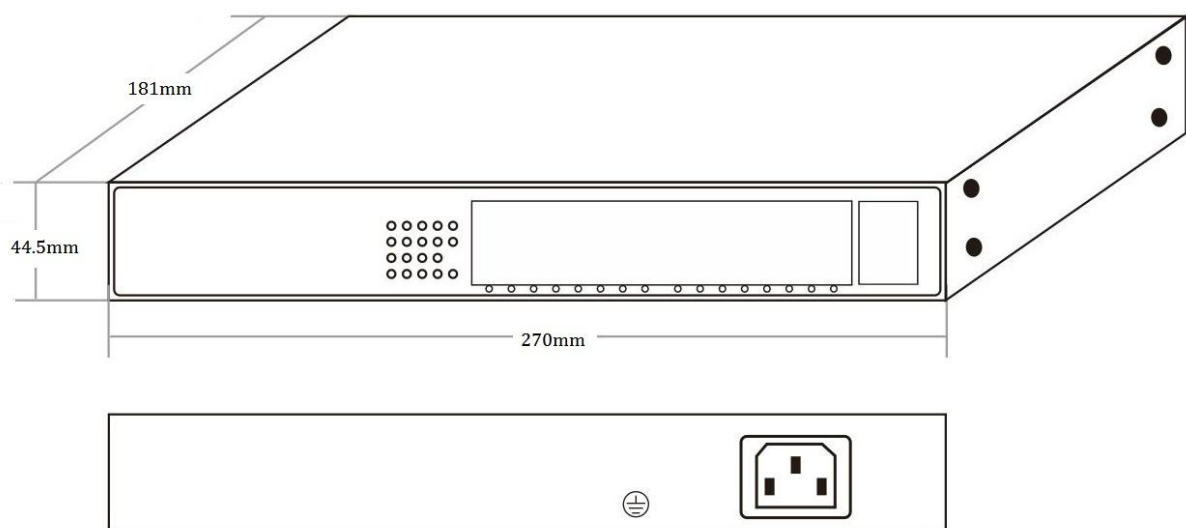
- ◇ CCC, CE, FCC, RoHS.
- ◇ Low power consumption, galvanized steel casing.
- ◇ The user-friendly panel can show the device status through the LED indicator of PWR, Link, PoE.
- ◇ Self-developed power supply, high redundancy design, providing a long term and stable PoE power output.

TECHNICAL SPECIFICATION

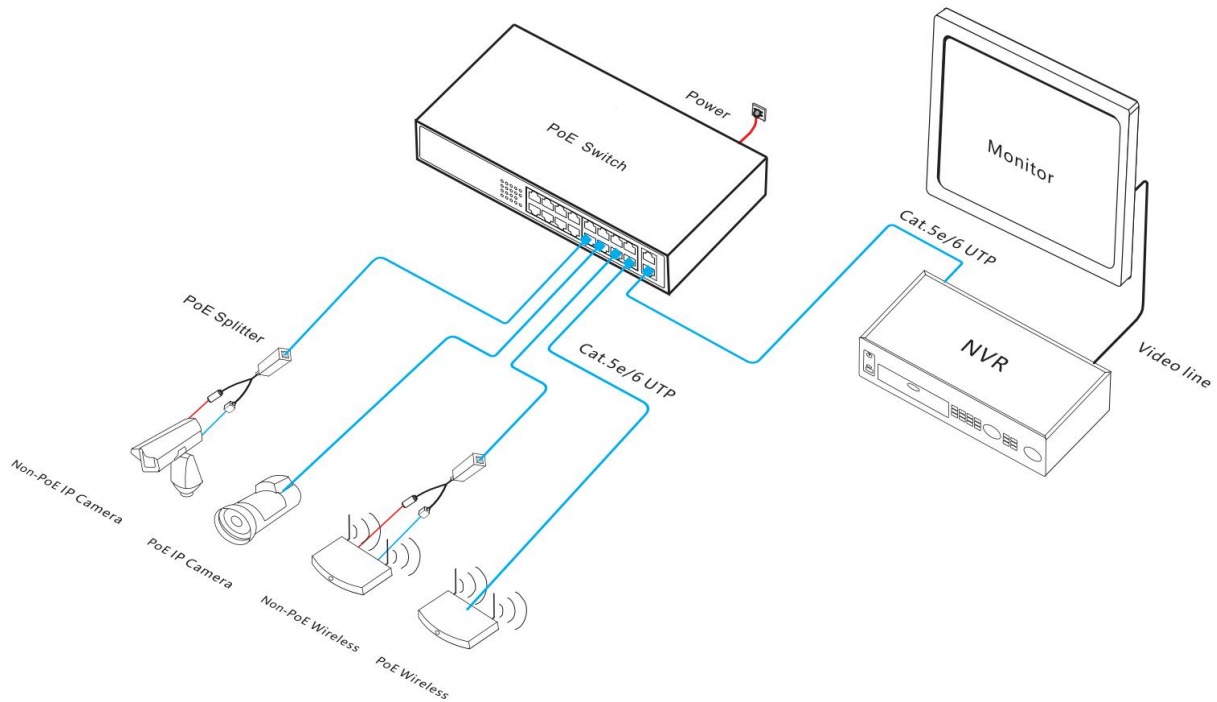
Model	ONV-H3016PS
Interface Characteristics	
Fixed Port	16*10/100/1000Base-T PoE ports (Data/Power) 2*10/100/1000Base-T uplink RJ45 ports (Data)
Ethernet Port	Port 1-16 support 10/100/1000Base-T auto-sensing, full/half duplex MDI/MDI-X self-adaption
Twisted Pair Transmission	10BASE-T: Cat3, 4, 5 UTP(≤100 meters) 100BASE-TX: Cat5 or later UTP(≤100 meters) 1000BASE-T: Cat5e or later UTP(≤100 meters)
Chip Parameter	
Network Protocol	IEEE802.3 10BASE-T, IEEE802.3i 10Base-T IEEE802.3u 100Base-TX, IEEE802.3ab 1000Base-T, IEEE802.3x
Forwarding Mode	Store and Forward(Full Wire Speed)
Switching Capacity	36Gbps (Non-blocking)
Forwarding Rate@64byte	26.78Mpps
MAC	2K
Buffer Memory	2M
Jumbo Frame	9.2k
LED Indicator	Power: PWR (Green), Network: Link (Green), PoE: PoE (Green)
PoE & Power Supply	
PoE Port	Port 1 to 16
Power Supply Pin	1/2(+) 3/6(-)
Max Power Per Port	30W, IEEE802.3af/at
Total PWR / Input Voltage	160W/ (AC100-240V)

Power Consumption	Standby <13W, Full load <160W
Power Supply	Built-in power supply, AC100~240V 50-60Hz 4.1A
Physical Parameter	
Operation TEMP / Humidity	-20~+55°C, 5%~90% RH Non condensing
Storage TEMP / Humidity	-40~+75°C, 5%~95% RH Non condensing
Dimension (L*W*H)	270*181*44.5mm
Net /Gross Weight	<1.25kg / <1.6kg
Installation	Desktop, 19 inch 1U cabinet
Certification & Warranty	
Lightning Protection	Lightning protection: 4KV 8/20us, Protection level: IP30
Certification	CCC, CE mark, commercial, CE/LVD EN62368-1, FCC Part 15 Class B, RoHS
Warranty	1 year, lifelong maintenance.

DIMENSION



APPLICATION



ORDERING INFORMATION

Model	Description	Built-in Power Supply
ONV-H3016PS	Unmanaged PoE switch with 16*10/100/1000M PoE ports and 2*10/100/1000M RJ45 ports. Port 1-16 can support IEEE802.3af/at PoE standard. Built-in power supply, compatible with 19-inch cabinet installation.	160W

PACKING LIST

	Content	Qty	Unit
Packing List	18-port full gigabit PoE switch	1	SET
	AC Power Line	1	PC
	Hardware Mounting Kit	1	SET
	User Guide	1	PC
	Warranty Card	1	PC

CONTACT US

ONV Optical Network Video Technologies (Shenzhen) Co., Ltd.

Tel: 0086-755-33376606

Fax: 0086-755-33376608

WeChat : ONV-PoE-IoT

Email: onv@onv.com.cn

Skype: onv@onv.com.cn

Website: www.onvcom.com

Headquarter Address: Room 1003, Block D, Terra Building, Futian District, Shenzhen

Factory Address: The 4-6th Floor, No. 59, Huaning Road, Xinwei Community, Dalang Street,
Longhua District, Shenzhen

