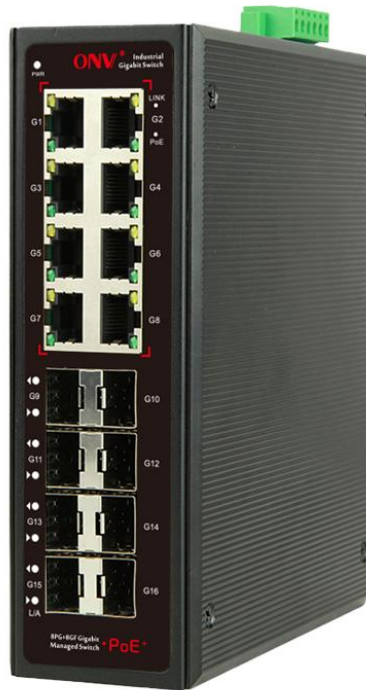


Product Datasheet

16-port Gigabit Easy Managed Industrial PoE Switch (ONV-IPS53168PFMA)



OVERVIEW

The ONV-IPS53168PFMA is a Gigabit Easy managed industrial PoE switch independently developed by ONV. It has 8*10/100/1000Base-T adaptive RJ45 ports and 8*1000Base-X SFP fiber ports. Port 1-8 can support the IEEE802.3af/at PoE standard, and the single-port PoE power output reaches 30W. As a PoE power supply device, it can automatically detect and identify standard powered devices and power them through network cables. It can power wireless APs, IP cameras, network phones, industrial sensors, and other PoE terminal devices through network cables to meet the network environment that requires a high-density PoE power supply. It is suitable for industrial scenarios such as intelligent transportation, rail transportation, power industry, mining, petroleum, shipping, metallurgy, and green energy construction to form an economical, efficient, stable, and reliable communication network.

The ONV-IPS53168PFMA supports the ONV cloud platform and APP cloud management

to realize security network topology management, port management, PoE management, remote operation and maintenance, and other functions. It has high reliability, is easy to install and maintain, has fast switching capabilities, and multiple access ports, making it suitable for access to LAN devices of various sizes.

FEATURE

■ Gigabit access, uplink SFP fiber port

- ◇ Support non-blocking wire-speed forwarding.
- ◇ Support full-duplex based on IEEE 802.3x and half-duplex based on Backpressure.
- ◇ Support Gigabit RJ45 port and uplink Gigabit SFP fiber port combination, which enables users to flexibly build networking to meet the needs of various scenarios.

■ Smart PoE power supply

- ◇ Comply with IEEE 802.3 af/at PoE standard, automatically identify PoE devices for power supply, and not damage non-PoE devices.
- ◇ Support remote PoE management function, realize remote on/off of PoE port, port power status check, PoE port fault query function, etc.
- ◇ 8*10/100/1000Base-T RJ45 ports support PoE power, meeting the PoE power requirements of security monitoring, industrial automation systems, wireless coverage and other scenarios.

■ Minimalist application

- ◇ Support real-time fault alarm and fault location.
- ◇ Support remote upgrade, remote restart, and restore to factory settings.
- ◇ Support cloud platform and APP cloud management, visualized PoE power supply control, network topology management, and VLAN division.
- ◇ Web network management function, QoS, link aggregation, ring network management, port mirroring, port control, and bandwidth management.

■ Stable and reliable

- ◇ CCC, CE, FCC, RoHS.
- ◇ The user-friendly panel can show the device status through the LED indicator of PWR, SYS, Link, and PoE.
- ◇ Low power consumption, aluminum alloy housing, and excellent heat dissipation to ensure the stable operation of the switch.

■ Rich port combination

- ◇ The chip integrates 8 Gigabit RJ45 ports PHY, and a single chip can support 8*10/100/1000M RJ45 ports and 8*1000M SFP fiber ports. It can be expanded to flexibly support port forms with different optical and electrical combinations.

■ Flexible shared cache

- ◇ For scenarios such as video and industrial access, the chip provides a built-in flexible shared cache to meet the requirements of business traffic bursts.

TECHNICAL SPECIFICATION

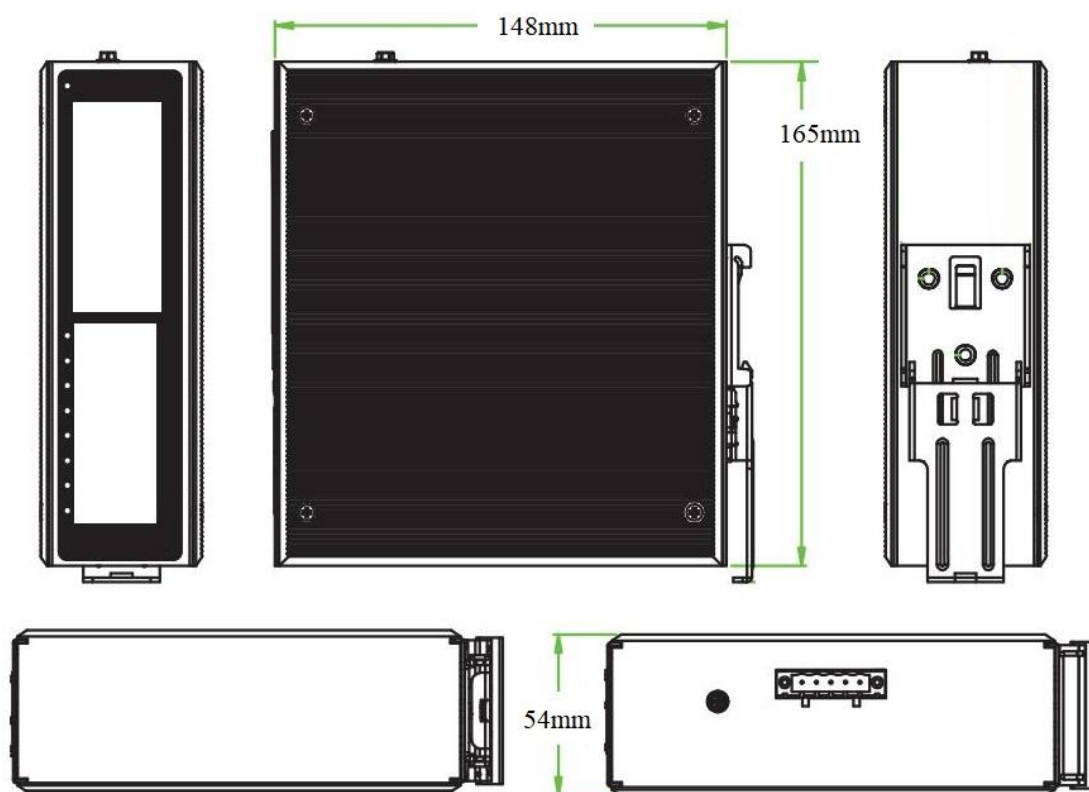
Model	ONV-IPS53168PFMA
Interface Characteristics	
Fixed Port	8*1000Base-X uplink SFP fiber ports (Data) 8*10/100/1000Base-T PoE ports (Data/ Power) 2 set V+, V- redundant DC power port (5Pin Phoenix terminal)
Ethernet Port	Port 1-8 can support 10/100/1000Base-T auto-sensing, full/ half duplex MDI/ MDI-X self-adaption
Twisted Pair Transmission	10BASE-T: Cat3,4,5 UTP (≤100 meters) 100BASE-TX: Cat5 or later UTP (≤100 meters) 1000BASE-T: Cat5e/6 or later UTP (≤100 meters)
Optical Fiber Port	Default no include optical modules (optional single-mode/ multi-mode, single fiber/ dual fiber optical module. LC)
Optical Cable/ Distance	Multi-mode: 850nm/ 0-550m, Single-mode: 1310nm/ 0-40km, 1550nm/

	0-120km
Chip Parameter	
Network Management Type	L2
Network Protocol	IEEE802.3 10BASE-T, IEEE802.3i 10Base-T, IEEE802.3u 100Base-TX, IEEE802.3ab 1000Base-T, IEEE802.3z 1000Base-X, IEEE802.3x
Forwarding Mode	Store and forward (Full wire speed)
Switching Capacity	56Gbps (non-blocking)
Forwarding Rate@64byte	23.81Mpps
MAC	8K
Buffer Memory	3M
Jumbo Frame	9.6K
LED Indicator	Power/ System: SYS(Green), Network: Link(Yellow), PoE: PoE (Green), Fiber port: L/A (Green)
Reset Switch	Press for 6 seconds and then release to restore to factory settings Short press twice (1 second interval) to switch to unmanaged state
PoE& Power Supply	
PoE Port	Port 1-8
PoE Management	Port PoE output on/off, Check the real-time power status of the port PoE
Power Supply Pin	1/2(+) 3/6 (-)
Max Power Per Port	30W, IEEE802.3 af/at
Power Consumption	Standby<8W, full load af<120W, at<240W
Input Voltage/ Interface	DC48-57V, 5Pin industrial Phoenix terminal, support anti-reverse protection
Power Supply	No, optional 48V/120W or 48V/240W industrial power supply
Physical Parameter	
Operation Temp/ Humidity	-40~+75°C, 5%~90% RH non condensing
Storage Temp/ Humidity	-40~+80°C, 5%~95% RH non condensing
Dimension (L*W*H)	165*148*54mm

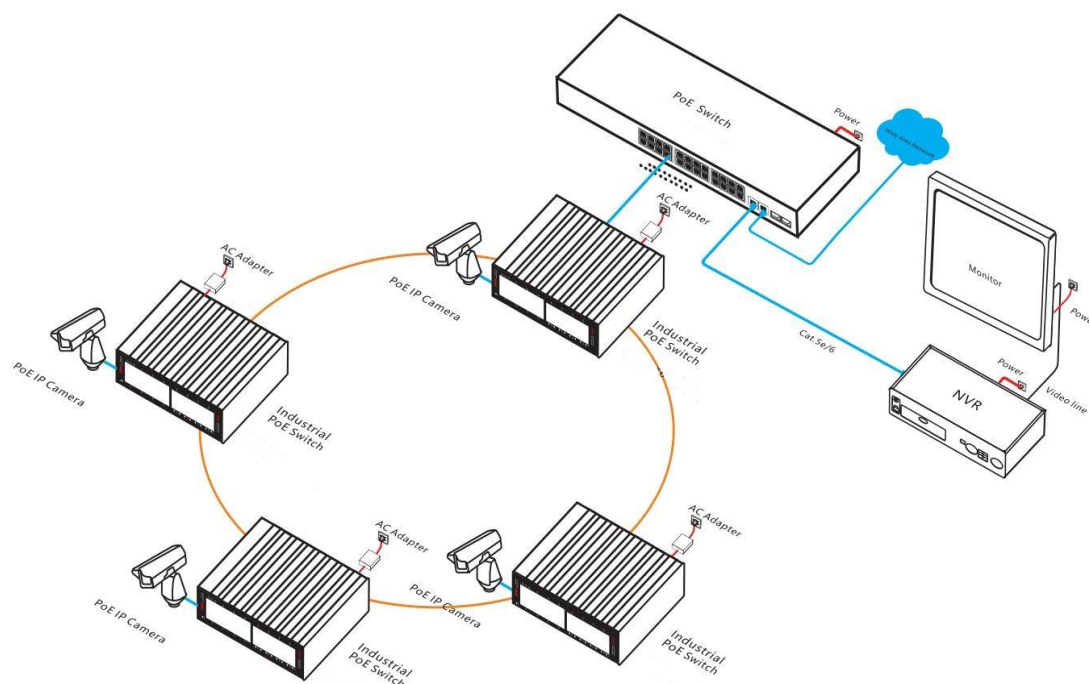
Net /Gross Weight	1.1kg/ 1.3kg
Installation	Desktop, 35mm DIN Rail
Certification& Warranty	
Lightning Protection	IEC61000-4-3 (RS):10V/m (80-1000MHz) FCC Part 15/CISPR22 (EN55022): Class A IEC61000-6-2 (Common Industrial Standard) IEC61000-4-9 (Pulsed magnet field): 1000A/m IEC61000-4-10 (Damped oscillation): 30A/m 1MHz IEC61000-4-12/18 (Shockwave): CM2.5kV, DM1kV Protection level: IP40, Lightning protection: 6KV 8/20us IEC61000-4-4(EFT): Power cable: ±4kV, data cable: ±2kV IEC61000-4-16 (Common-mode transmission): 30V, 300V, 1s IEC61000-4-2 (ESD): ±8kV contact discharge, ±15kV air discharge IEC61000-4-6 (Radio frequency transmission): 10V(150kHz~80MHz) IEC61000-4-8 (Power frequency magnetic field): 100A/m, 1000A/m, 1s-3s IEC61000-4-5 (Surge): Power cable: CM±4kV/ DM±2kV, data cable: ±4kV
Mechanical Properties	IEC60068-2-6 (Anti Vibration), IEC60068-2-27 (Anti Shock), IEC60068-2-32 (Free Fall)
Certification	CE mark, commercial, CE/LVD EN62368-1, FCC Part 15 Class A, RoHS
Warranty	5 years, lifelong maintenance.
Software	
Interface	Port traffic statistics, IEEE802.3x flow control (Full-duplex) Port status display, Port duplex/ negotiation rate configuration
Spanning Tree	STP/RSTP
VLAN	Port-based IEEE802.1Q VLAN configuration (4K)
Port Aggregation	Static aggregation, LACP
Multicast	IGMP Snooping v1/v2, Max 256 multicast groups
Mirroring	Support basic port traffic mirroring
QoS	Congestion avoidance, Flow classification based on CoS/DSCP

	<p>Shaping based on port and queue, ACL based on L2/L3/L4/UDF</p> <p>8* Output queues per port, support SP/WDRR/SP+WDRR scheduling</p>
Security	<p>Black hole MAC, 48*CPU queue protection</p> <p>Port speed limit, Port-based broadcast storm suppression</p> <p>Port isolation, VLAN-based isolation between physical ports</p> <p>Broadcast storm control, Port-based MAC learning number limit</p>
Management	<p>Mobile APP operation and maintenance management</p> <p>ONV cloud platform management, One-key recovery, Web Management</p>
System	<p>Web browser: Mozilla Firefox 2.5 or higher, Google Chrome V42 or higher, Cat5 and above Ethernet cable</p> <p>TCP/IP, network adapter, and network operating system (such as Microsoft Windows, Linux, Mac OS X) installed on each computer in the network Cat5 and above Ethernet cable</p>

DIMENSION



APPLICATION



ORDERING INFORMATION

Model	Description	Recommended Power Supply
ONV-IPS53168PFMA	Easy managed industrial PoE switch with 8*10/100/1000M RJ45 ports and 2*1000M uplink SFP fiber ports. Port 1-8 can support the IEEE802.3 af/at PoE standard. It can support dual DC redundant power input (Phoenix terminal connection) and DIN rail mounting.	120W/240W
Note: The optical module and power supply are not included and need to be purchased.		

PACKING LIST

Packing List	Content	Qty	Unit
	16-port Gigabit Easy managed industrial PoE switch	1	Set
	User Guide	1	PC
	Warranty Card and Certificate of Conformity	1	PC

OPTICAL MODULE

Product	Model	Description	Unit
1.25G Optical Module	2630-G	Industrial SFP optical module, 1.25G multi-mode dual fiber 850nm, transmission distance: 550m, LC interface, supports DDM function and hot plugging.	PC
	2632-G	Industrial SFP optical module, 1.25G single-mode dual fiber 1310nm, transmission distance: 20km, LC interface, supports DDM function and hot plugging.	PC
	2612-T-G	Industrial SFP optical module, 1.25G single-mode single fiber TX1310nm/ RX1550nm, transmission distance: 20km, LC interface, supports DDM function and hot plugging.	PC
	2613-R-G	Industrial SFP optical module, 1.25G single-mode single fiber TX1550nm/ RX1310nm, transmission distance: 20km, LC interface, supports DDM function and hot plugging.	PC
	2612-T-G-SC	Industrial SFP optical module, 1.25G single-mode single fiber TX1310nm/ RX1550nm, transmission distance: 20km, SC interface, supports DDM function and hot plugging.	PC
	2613-R-G-SC	Industrial SFP optical module, 1.25G single-mode single fiber TX1550nm/ RX1310nm, transmission distance: 20km, SC interface, supports DDM function and hot plugging.	PC

POWER SUPPLY

Product	Model	Description	Unit
120W DIN Rail Industrial Power Supply	GWS-DP120-48	DIN Rail 120W single set of output power supply Input Voltage: AC100V-240V 50-60Hz, 2.3A Output Voltage: DC48V, 2.5A Operation Temperature: -40℃ to +70℃	PC
240W DIN Rail Industrial Power Supply	GWS-DP240-48	DIN Rail 240W single set of output power supply Input Voltage: AC100V-240V 50-60Hz, 3.0A Output Voltage: DC48V, 5.0A Operation Temperature: -40℃ to +70℃	PC

CONTACT US



Optical Network Video Technologies (Shenzhen) Co., Ltd.

Tel: 0086-755-33376606

Fax: 0086-755-33376608

WeChat: ONV-PoE-IoT

Email: onv@onv.com.cn

Skype: onv@onv.com.cn

Teams: onv@onv.com.cn

Website: www.onvcom.com

Headquarter Address: Room 1003, Block D, Terra Building, Futian District, Shenzhen

Factory Address: Building B3, Galaxy Artificial Intelligence Industrial Park, No. 333,

Zhongkai 6th Road, Chenjiang Street, Zhongkai High-tech Zone, Huizhou

